

Installation Manual

VERSA-300-PLN

Date: 05/2018

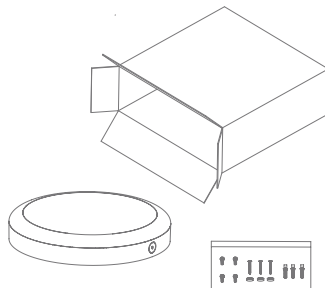
| Variant | Item No. | Description |
|---------|-------------------|--|
| 19800 | VERSA-300-PLN-BLK | 15/18/25W Bunker Light, TRIO. Black Finish |
| 19802 | VERSA-300-PLN-WHT | 15/18/25W Bunker Light, TRIO. Satin White Finish |

Thank you for purchasing your new LED VERSA-300-PLN, Please take the time to read and understand the instruction sheet below. Failure to do so may void warranty.

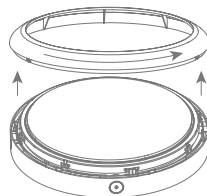
Specifications

| | | | | | |
|--------------|--|--|--|-----------------|------------|
| Lumen (±5%): | 15W Warm White 3000K - 1380lm Neutral White 4000K - 1420lm White 5700K - 1470lm | 18W Warm White 3000K - 1560lm Neutral White 4000K - 1650lm White 5700K - 1710lm | 25W Warm White 3000K - 2080lm Neutral White 4000K - 2200lm White 5700K - 2320lm | | |
| Voltage: | 240V | Beam Angle: | 110° | Operating Temp: | -20°C~45°C |
| Power: | 15W - 18W - 25W (Switchable) | CCT: | 3000K - 4000K - 5700K (Switchable) | Power Factor: | 0.9 |
| IP Rating: | IP65 | Lifespan: | 50,000hrs | IK Rating: | IK08 |
| CRI: | ≥80 | Dimmable: | No | | |

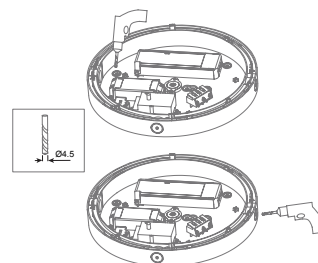
1. Take out light and accessory pack from box



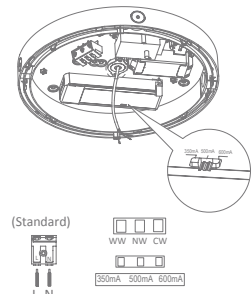
2. Unscrew the front frame anticlockwise, to separate the frame, diffuser and back.



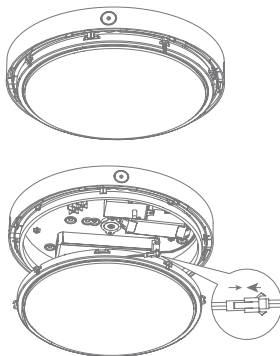
3. Disconnect the connection plug, fix the base plate



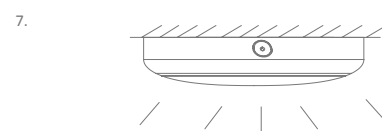
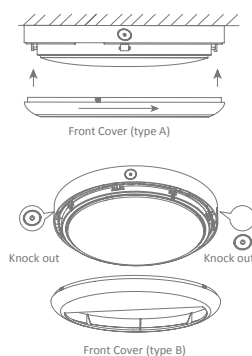
4. Connect the wires to the block through the reliefs



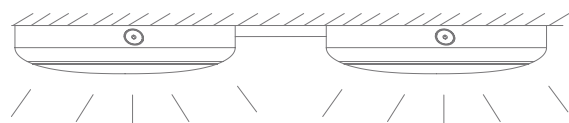
5. Set the connectors well and insert the diffuser cover on the back housing. Insert screws.



6. Match the cover with plate (If the Type B cover, make sure the center line is on the connecting line of two knock out)



Installation of concealed wiring.



Installation of opening wiring.



Note: -The lamp must be installed by professional electrician
-Ensure the power supply is switched off before fitting this product

-Do not touch the lamp when in use
-Keep away from hot steam and corrosive gas