

Installation Manual

VERSA-300-ELID

Date: 05/2018

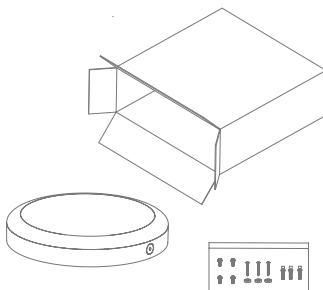
Variant	Item No.	Description
19804	VERSA-300-ELID-BLK	15/18/25W Bunker Light, TRIO. Eyelid, Black Finish
19806	VERSA-300-ELID-WHT	15/18/25W Bunker Light, TRIO. Eyelid, Satin White Finish

Thank you for purchasing your new LED VERSA-300-ELID, Please take the time to read and understand the instruction sheet below. Failure to do so may void warranty.

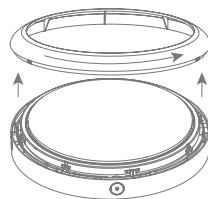
Specifications

Lumen (±5%):	15W Warm White 3000K - 830lm Neutral White 4000K - 850lm White 5700K - 880lm	18W Warm White 3000K - 940lm Neutral White 4000K - 990lm White 5700K - 1050lm	25W Warm White 3000K - 1250lm Neutral White 4000K - 1320lm White 5700K - 1400lm		
Voltage:	240V	Beam Angle:	110°	Operating Temp:	-20°C~45°C
Power:	15W - 18W - 25W (Switchable)	CCT:	3000K - 4000K - 5700K (Switchable)	Power Factor:	0.9
IP Rating:	IP65	Lifespan:	50,000hrs	IK Rating:	IK08
CRI:	≥80	Dimmable:	No		

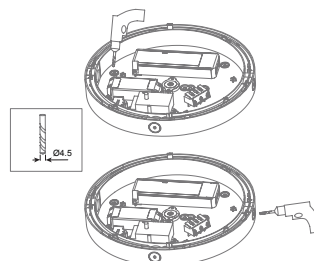
1. Take out light and accessory pack from box



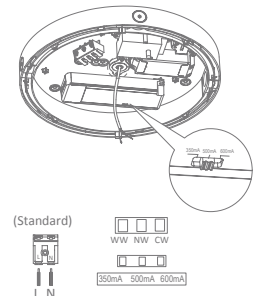
2. Unscrew the front frame anticlockwise, to separate the frame, diffuser and back.



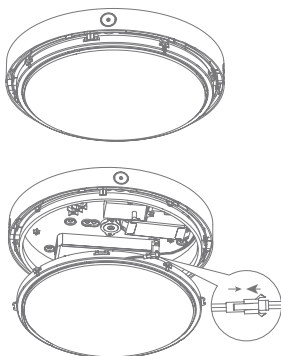
3. Disconnect the connection plug, fix the base plate



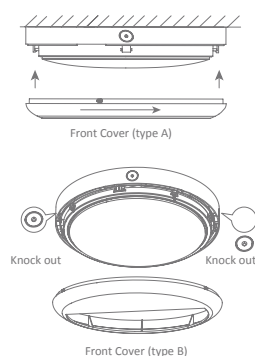
4. Connect the wires to the block through the reliefs



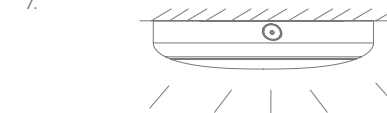
5. Set the connectors well and insert the diffuser cover on the back housing. Insert screws.



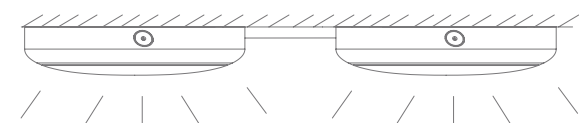
6. Match the cover with plate (If the Type B cover, make sure the center line is on the connecting line of two knock out)



7.



Installation of concealed wiring.



Installation of opening wiring.



Note: -The lamp must be installed by professional electrician
-Ensure the power supply is switched off before fitting this product

-Do not touch the lamp when in use
-Keep away from hot steam and corrosive gas