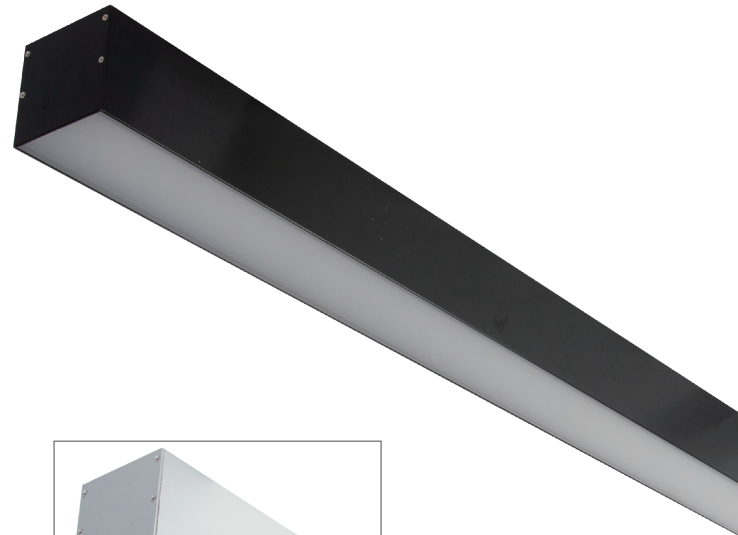


Max-75-SM 1M LED Profile



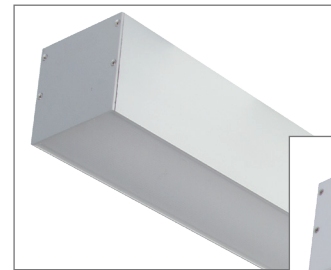
Description

The Max-75 Surface Mounted profile is designed to suit commercial and residential applications, this profile system incorporates an extruded aluminium body with flat PMMA diffuser, and Osram Led boards. The system offers many additional options such as Dali dimming and emergency upon request.

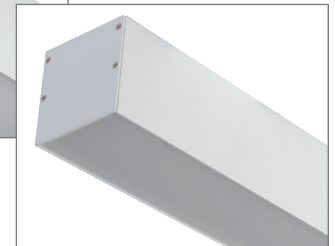


Specification Features

Input Voltage:	240V
Power (W):	17.3W/Per Metre
IP rating (IP):	20
Lumens (lm):	Warm White 3000K - 2466lm Neutral White 4000K - 2600lm White 5000K - 2600lm Extra White 6500K - 2600lm
LED type:	Osram LED Boards
CCT:	3000K - 4000K - 5000K - 6500K
CRI:	≥80
Beam angle (°):	120°
Dimmable:	No**
Lifespan (hrs):	50,000hrs
Installation:	Ceiling Mounted
Material:	Extruded 6063 aluminium
Finish:	Clear anodised, black or white powder coat finish
Diffuser:	Flat high output opal-frost
Length:	Sold per metre*
Size (mm)	Profile (W) 75mm x (H) 75mm
Available Upon Request:	<ul style="list-style-type: none"> • High Output LED Boards • Intergrated Emergency



Aluminium Finish



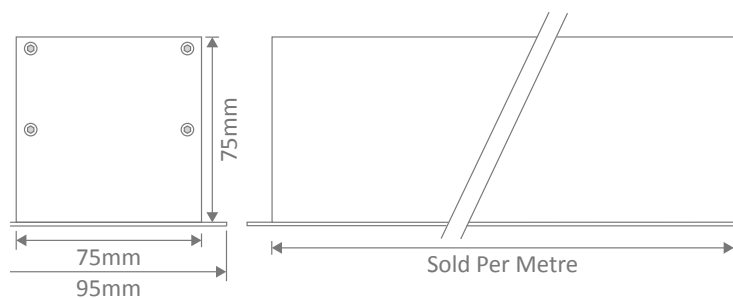
White Finish

Note: This product is made to order and may have a lead time.

* Profile can be cut to any length required.

** Dali and 0-10V dimming available upon request

Diagrams / Additional



Item No.	Variant	Colour
Max-75-SM Surface Mounted (BLK)	22364	3000K
	22365	4000K
	22366	5000K
	22367	6500K

Item No.	Variant	Colour
Max-75-SM Surface Mounted (ALU)	22360	3000K
	22361	4000K
	22362	5000K
	22363	6500K

Item No.	Variant	Colour
Max-75-SM Surface Mounted (WHT)	22368	3000K
	22369	4000K
	22370	5000K
	22371	6500K