

Installation Manual

LOFTUS

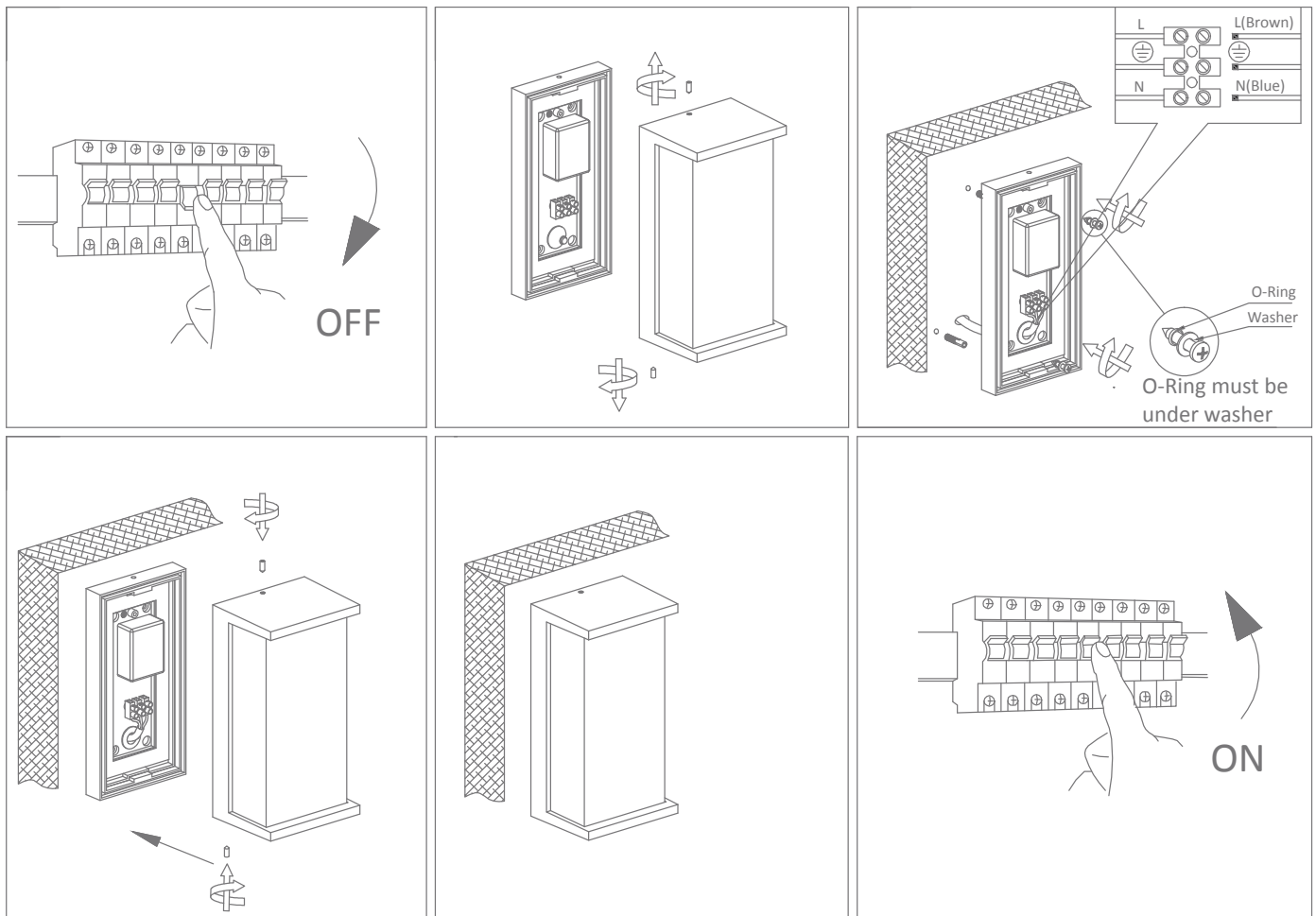
Date: 06/2018

Variant	Item No.	Description
19750	LOFTUS-9W-BLK	LED Wall light. Duo Technology, black finish.
19751	LOFTUS-9W-WHT	LED Wall light. Duo Technology, satin white finish.
19752	LOFTUS-9W-DGR	LED Wall light. Duo Technology, Dark grey finish.

Thank you for purchasing your new LED LOFTUS, Please take the time to read and understand the instruction sheet below. Failure to do so may void warranty.

Specifications

Voltage:	240V	Lumen (±5%):	Warm White 3000K - 437lm White 5000K - 437lm	Dimmable:	NO
Power:	9W	Beam Angle:	148°	Operating Temp:	-20°C~40°C
IP Rating:	IP65	CCT:	3000K - 5000K (Switchable)	Power Factor:	
CRI:	≥82	Lifespan:	50,000 Hrs		



Note: -The lamp must be installed by professional electrician
-Ensure the power supply is switched off before fitting this product

-Do not touch the lamp when in use
-Keep away from hot steam and corrosive gas