

SEC SERIES IP65

Surface Mounted LED *Tri-CCT* Security Pillar Lights with / without Sensor

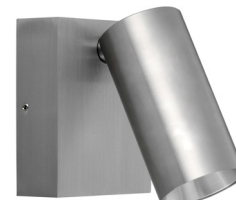
- Input voltage: 240V AC 50/60Hz
- Inbuilt Constant Current LED driver
- Adjustable: 180° (90° up/down and left/right)
- Housing: powder coated aluminium for white and black models; anodized aluminium for Titanium models;
- Mounting bracket: aluminium
- Diffuser: clear glass with honeycomb louver
- Tri-CCT (3000K/ 4000K/ 5500K)
- CCT inbuilt switch under back plate
- LED chips: 1616 LEDs
- CRI: ≥80
- Power factor: ≥0.9
- Ambient temperature: -10 to 40°C
- Not suitable for dimming
- Suitable for 2 way switching



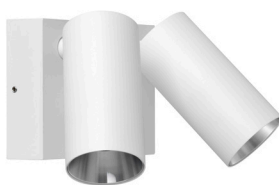
SEC05



SEC06



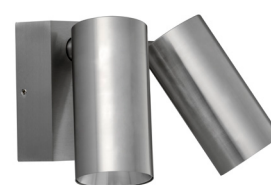
SEC07



SEC08



SEC09



SEC10



SEC08S



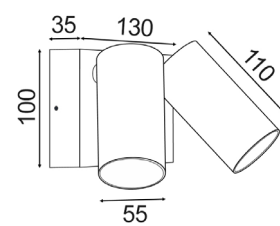
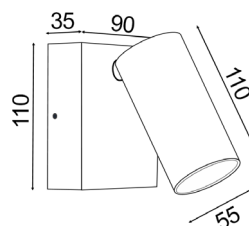
SEC09S



SEC10S

Sensor Technical Spec:

- Sensor type: PIR sensor
- Installation height: recommended 2-2.5m
- Detection angle: 120°
- Detection area: max.10m
- Detection range (ØxH): max.10m when installed 2-2.5m
- Time delay: 8±5 sec to 12±2 min (adjustable)
- Manual override: yes



*Must be installed by a licenced electrician (Installation instructions sheet provided in each product box)

Part No.	Description	Colour	Lumens (LM)			Watt	Box Weight (kg)	Box Size (cm)	Carton QTY
			3000K	4000K	5500K				
SEC05	SECURITY S/ADJ LED Wh No sensor	White	760	800	850	8W	0.7	13x10x13	1/20
SEC06	SECURITY S/ADJ LED Blk No sensor	Black	760	800	850	8W	0.7	13x10x13	1/20
SEC07	SECURITY S/ADJ LED TITANIUM No sensor	Titanium	760	800	850	8W	0.7	13x10x13	1/20
SEC08	D/ADJ LED MATTE WH No sensor	White	2X760	2X800	2X850	2X8W	1.2	16x13x13	1/10
SEC09	D/ADJ LED MATTE BLK No sensor	Black	2X760	2X800	2X850	2X8W	1.2	16x13x13	1/10
SEC10	D/ADJ LED TITANIUM No sensor	Titanium	2X760	2X800	2X850	2X8W	1.2	16x13x13	1/10
SEC08S	D/ADJ LED MATTE WH + sensor	White	2X760	2X800	2X850	2X8W	1.2	16x13x13	1/10
SEC09S	D/ADJ LED MATTE BLK + sensor	Black	2X760	2X800	2X850	2X8W	1.2	16x13x13	1/10
SEC10S	D/ADJ LED TITANIUM + sensor	Titanium	2X760	2X800	2X850	2X8W	1.2	16x13x13	1/10